

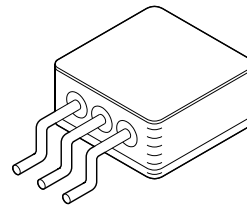


1.5A LOW NOISE FIXED OUTPUT LDO REGULATOR

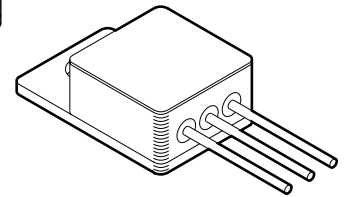
5140 SERIES

FEATURES:

- Fast Transient Response
- Low Dropout Voltage: 340mV @ 1.5A
- Low Noise: 40uVrms (10Hz to 100KHz)
- Fixed Output Voltages: 1.5V, 1.7V, 1.8V, 1.9V, 2.0V, 2.5V, 3.3V
- No Protection Diodes Required
- Stable with 10uF Output Capacitor
- Available with Top Tab or Tableless Package
- Available in Four Lead Configurations
- Contact TTM Technologies for MIL-PRF-38534 Qualification Status



NO TAB

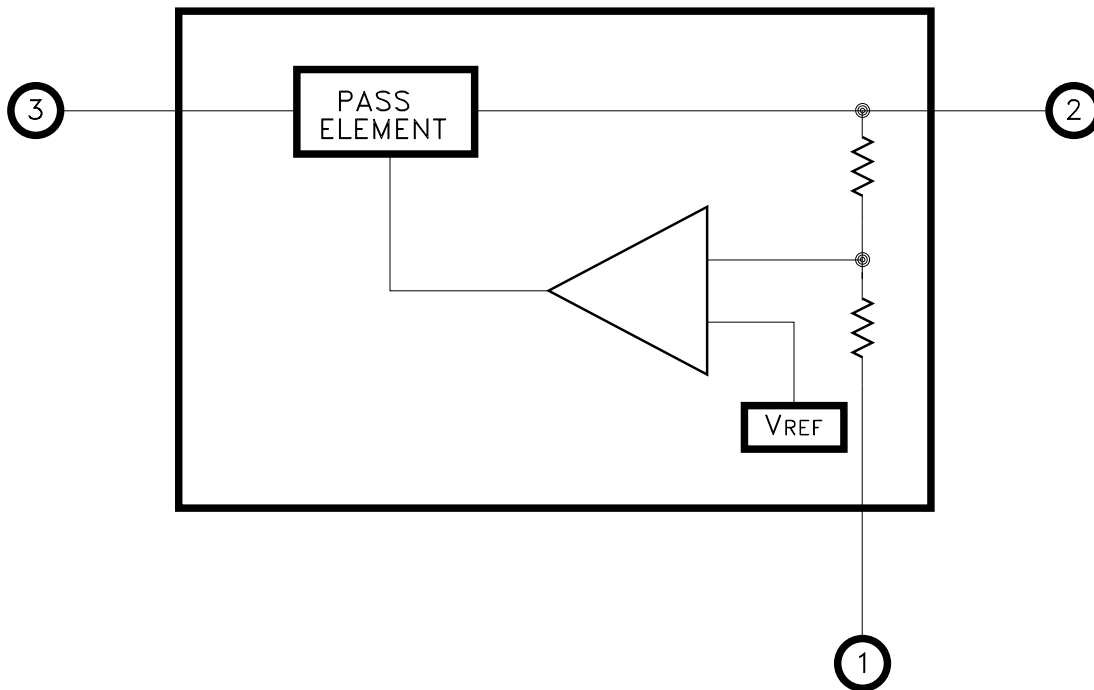


TOP TAB

DESCRIPTION:

The MSK 5140 series regulators offer a low 340mV dropout voltage while supplying to 1.5A of output current. With fast transient response, these regulators have very low output noise. Excellent line and load regulation characteristics ensure accurate performance for multiple applications. These regulators offer internal short circuit current limit, thermal limiting and reverse current protection which eliminates the need for external components and excessive derating. The MSK 5140 series regulators are available in a hermetically sealed space efficient TO-257 package with multiple lead form options.

EQUIVALENT SCHEMATIC



TYPICAL APPLICATIONS

- Post Regulator For Switching Power Supplies
- Battery Powered Equipment
- Microprocessor Power Supplies
- Pre-amplifier Power Supplies

PIN-OUT INFORMATION

- 1 GND
- 2 VOUT
- 3 VIN

CASE = ISOLATED

ABSOLUTE MAXIMUM RATINGS ^⑧

IN	Supply Voltage.....	20V	T _{ST}	Storage Temperature Range	-65°C to +150°C
I _{OUT}	Output Current	1.5A	T _{LD}	Lead Temperature Range	
VIN	Differential Input Voltage	20V		(10 Seconds Soldering).....	300°C
TC	Case Operating Temperature Range		T _J	Junction Temperature	+150°C
	MSK5140H	-55°C to +125°C			
	MSK5140.....	-40°C to +85°C			

ELECTRICAL SPECIFICATIONS

Parameter	Test Conditions ^①	Group A Subgroup	MSK 5140H SERIES			MSK 5140 SERIES			Units
			Min.	Typ.	Max.	Min.	Typ.	Max.	
Minimum Input Voltage ^②	I _{LOAD} = 0.5A I _{LOAD} = 1.5A	1	-	1.9	-	-	1.9	-	V
		1, 2, 3	-	2.1	2.5	-	2.1	2.5	V
Regulated Output Voltage	VIN = (V _{OUT} +1V) 0mA < I _{OUT} < 1.5A VIN = 20V I _{OUT} = 0mA	1	-1.0	-	1.0	-1.0	-	1.0	%
		2, 3	-2.5	-	2.5	-	-	-	%
Line Regulation ^⑥	ΔVIN = (V _{OUT} +0.5V) to 20V I _{LOAD} = 0mA	1, 2, 3	-1.0	-	1.0	-1.0	-	1.0	%
Load Regulation	VIN = (V _{OUT} +1.0V) ΔI _{LOAD} = 0mA to 1.5A	1	-1.0	-	1.0	-1.0	-	1.0	%
		2, 3	-1.5	-	1.5	-	-	-	%
Dropout Voltage	I _{LOAD} = 1.5A	1	-	0.34	0.45	-	0.34	0.45	V
		2, 3	-	-	0.60	-	-	-	V
GND Pin Current ^⑦	VIN = V _{OUT} +1V, I _{LOAD} = 0mA	1, 2, 3	-	6.2	8.0	-	6.2	8.0	mA
Output Voltage Noise ^②	C _{OUT} = 10μF, I _{LOAD} = 1.5A BW = 10Hz to 100Hz	-	-	40	-	-	40	-	μVrms
Ripple Rejection ^②	VIN - V _{OUT} = 1.5VDC, I _{LOAD} = 0.75A V _{RIPPLE} (120Hz) = 0.5V _{PP}	1	55	63	-	55	63	-	dB
Current Limit	VIN = V _{OUT} +1V	1, 2, 3	1.6	-	-	1.6	-	-	A
Reverse Output Current ^②	VIN < V _{OUT}	1	-	600	1200	-	600	1200	μA
Thermal Resistance ^②	Junction to Case @ 125°C	-	-	5.6	6.5	-	5.6	6.5	°C/W

NOTES:

- ① The output is decoupled to ground using a 100μF low ESR tantalum capacitor in parallel with a 1μF ceramic capacitor. See figure 1 for typical circuit.
- ② Guaranteed by design but not tested. Typical parameters are representative of actual device performance but are for reference only.
- ③ Industrial grade devices shall be tested to subgroups 1 unless otherwise requested.
- ④ Military grade devices ("H" suffix) shall be 100% tested to subgroups 1, 2 and 3.
- ⑤ Subgroup 1 T_A = +25°C
Subgroup 2 T_A = +125°C
Subgroup 3 T_A = -55°C
- ⑥ ΔVIN test condition minimum is 2.21V for the MSK 5140-1.5.
- ⑦ GND Pin Current includes a constant 5mA for the internal feedback resistor network.
- ⑧ Continuous operation at or above absolute maximum ratings may adversely effect the device performance and/or life cycle.

APPLICATION NOTES

INPUT BYPASS CAPACITORS

Unless the regulator is located very close to the main input filter capacitor, a 1 μ F to 10 μ F low ESR tantalum capacitor should be added to the regulator's input to maximize transient response and minimize power supply transients. A 0.1 μ F ceramic capacitor should also be used for high frequency bypassing.

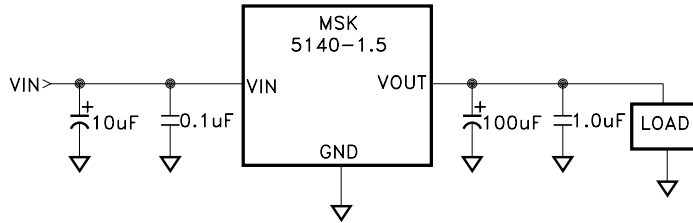


FIGURE 1

OUTPUT CAPACITOR SELECTION

For most applications a 10 μ F low ESR tantalum capacitor, as close to the regulators output as possible, is all that is required for the MSK 5140 to be stable. When using a 10 μ F capacitor on the lower output voltage devices, a minimum ESR is required of the capacitor. This requirement decreases from 20m Ω on the 1.5V output regulator to 5m Ω on the 3.3V output regulator. With an increase in capacitance, the minimum ESR requirement decreases. At 100 μ F, the minimum ESR requirement decreases to 5m Ω for all versions of the MSK 5140. To reduce ringing and improve transient response, capacitors with slightly larger ESR in the range of 20m Ω to 50m Ω provides improved damping. Capacitors with higher ESR can be combined in parallel with low ESR ceramic capacitors for good high frequency response and settling time. The maximum ESR value must be less than 3 Ω . Care must be taken when selecting a ceramic type. The X5R and X7R are the best choice for output stability when considering response due to applied voltage and temperature.

REVERSE VOLTAGE PROTECTION

The regulators are protected against reverse input and output voltages. Reverse input voltages up to 20V will be blocked from the input while current flow is limited to less than 1mA. The reverse voltage on the input is also prevented from appearing on the output and the load. When the input voltage is pulled down to ground and the output is held up by a second source, the current flow between them is limited to typically 600 μ A. See the electrical specifications table.

LOAD REGULATION

In voltage regulator applications where very large load currents are present, the load connection is very important. The path connecting the output of the regulator to the load must be extremely low impedance to avoid affecting the load regulation specifications. As shown in figure 2, any impedance (R_s) in this path will form a voltage divider with the load. For best results the ground pin should be connected directly to the load as shown in figure 2. The direct connection eliminates the effect the potential voltage drop in the power ground path can have on the internal ground sensing, thus improving load regulation. The MSK 5140 ground pin trace must be designed to carry the ground pin current without significant voltage drops. See typical performance curves.

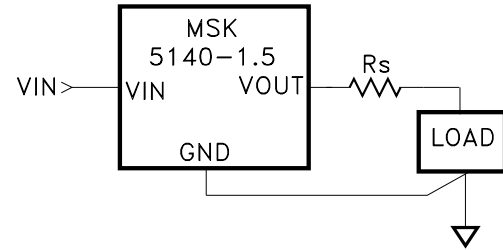


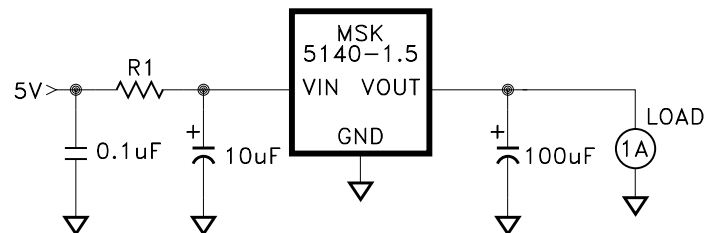
FIGURE 2

OVERLOAD PROTECTION

The MSK 5140 series regulators feature both current limit and thermal overload protection. Within the safe operating region, the regulators will current limit above their 1.6amp rating. As the input to output voltage increases, however, the current limit decreases to keep the output transistor within its power dissipation limitation. See the Current Limit Typical Curves for conditional performance detail. If the device heats enough to exceed its rated die junction temperature due to excessive ambient temperature, improper heat sinking etc., the regulators also shutdown until an appropriate junction temperature is maintained. To bring the regulator out of shutdown, the device input may need to be cycled to zero and power reapplied to eliminate the shutdown condition.

MINIMIZING POWER DISSIPATION

To maximize the performance and reduce power dissipation of the MSK 5140 series devices, V_{IN} should be maintained as close to dropout or at V_{IN} minimum when possible. See Input Supply Voltage requirements. A series resistor can be used to lower V_{IN} close to the dropout specification, lowering the input to output voltage differential. In turn, this will decrease the power that the device is required to dissipate. Knowing peak current requirements and worst case voltages, a resistor can be selected that will drop a portion of the excess voltage and help to distribute the heating. The circuit below illustrates this method.



The maximum resistor value can be calculated from the following:

$$R1_{max} = \frac{V_{IN\ min} - (V_{OUT\ max} + V_{DROP})}{I_{OUT\ peak} + GND\ Pin\ Current}$$

Where:

$V_{IN\ min}$ = Minimum input voltage

$V_{OUT\ max}$ = Maximum output voltage across the full temperature range

V_{DROP} = Worst case dropout voltage (Typically 430mV)

$I_{OUT\ peak}$ = Maximum load current

$GND\ Pin\ Current$ = Max. $GND\ Pin\ Current$ at $I_{OUT\ peak}$

APPLICATION NOTES CONT'D

HEAT SINK SELECTION

To select a heat sink for the MSK 5140, the following formula for convective heat flow may be used.

Governing Equation

$$T_J = P_D \times (R_{\theta JC} + R_{\theta CS} + R_{\theta SA}) + T_A$$

Where

- T_J = Junction Temperature
- P_D = Total Power Dissipation
- $R_{\theta JC}$ = Junction to Case Thermal Resistance
- $R_{\theta CS}$ = Case to Heat Sink Thermal Resistance
- $R_{\theta SA}$ = Heat Sink to Ambient Thermal Resistance
- T_A = Ambient Temperature

$$\text{Power Dissipation} = (V_{IN} - V_{OUT}) \times I_{OUT}$$

Next, the user must select a maximum junction temperature. The absolute maximum allowable junction temperature is 150°C. The equation may now be rearranged to solve for the required heat sink to ambient thermal resistance ($R_{\theta SA}$).

Example

An MSK 5140 is connected for $V_{IN} = +5V$ and $V_{OUT} = +3.3V$. I_{OUT} is a continuous 1.0A DC level. The ambient temperature is +25°C. The maximum desired junction temperature is +125°C.

$R_{\theta JC} = 5.6^\circ\text{C/W}$ and $R_{\theta CS} = 0.15^\circ\text{C/W}$ for most thermal greases

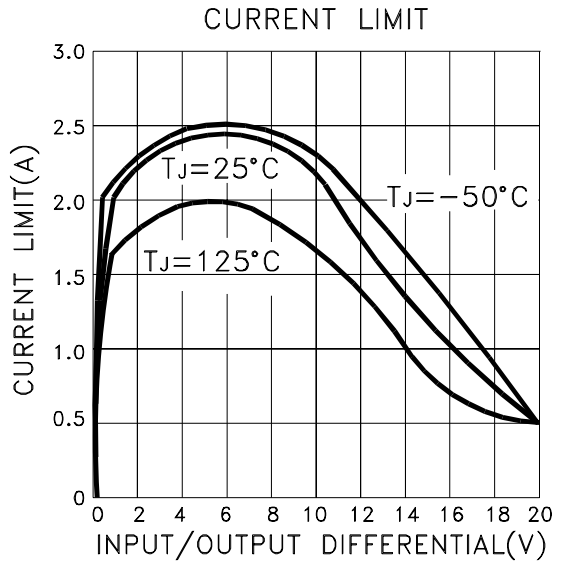
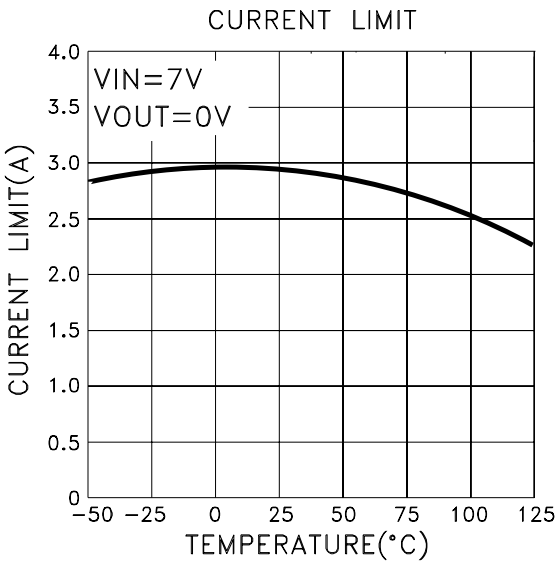
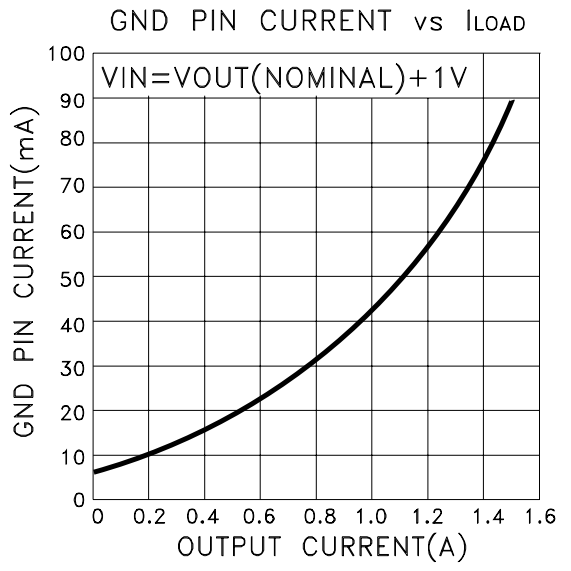
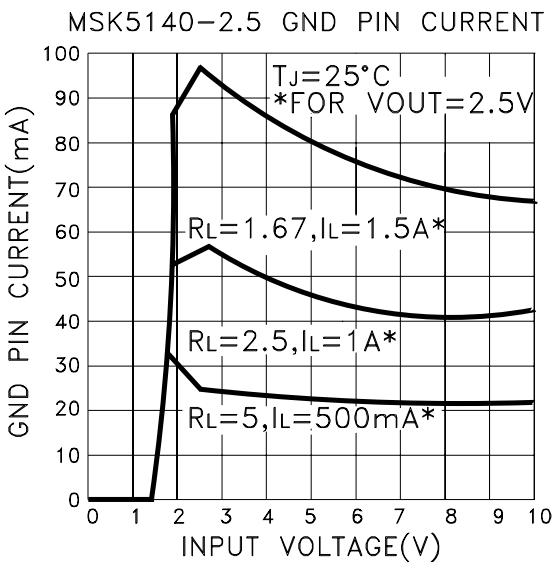
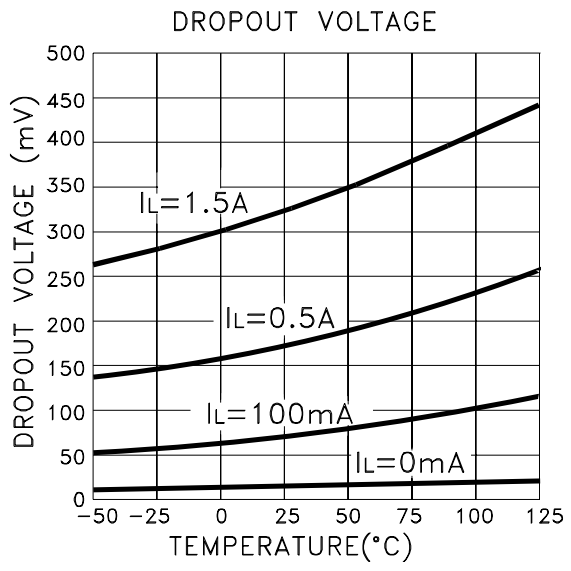
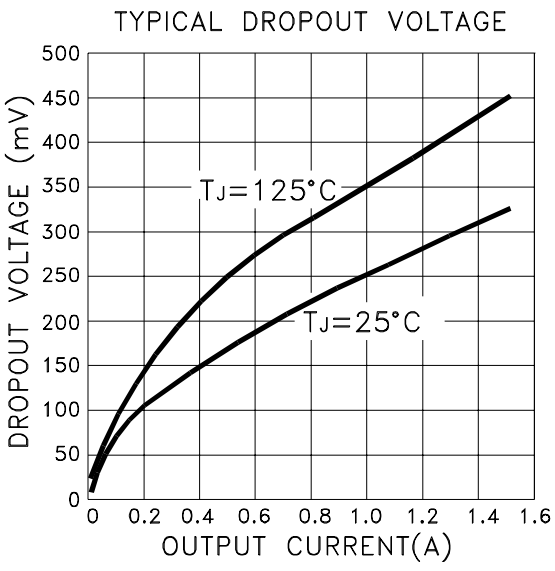
$$\begin{aligned} \text{Power Dissipation} &= (5V - 3.3V) \times (1.0A) \\ &= 1.7 \text{ Watts} \end{aligned}$$

Solve for $R_{\theta SA}$:

$$\begin{aligned} R_{\theta SA} &= \left[\frac{125^\circ\text{C} - 25^\circ\text{C}}{1.7\text{W}} \right] - 5.6^\circ\text{C/W} - 0.15^\circ\text{C/W} \\ &= 53.1^\circ\text{C/W} \end{aligned}$$

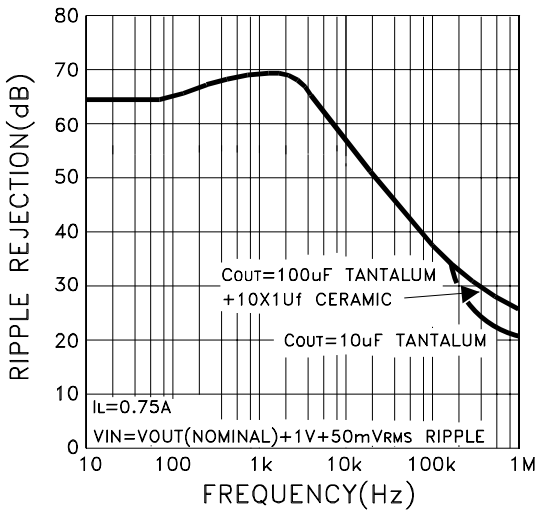
In this example, a heat sink with a thermal resistance of no more than 53.1°C/W must be used to maintain a maximum junction temperature of no more than 125°C.

TYPICAL PERFORMANCE CURVES

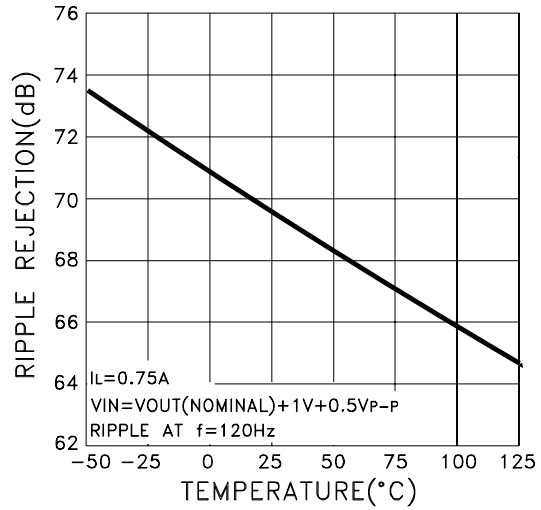


TYPICAL PERFORMANCE CURVES CONT'D

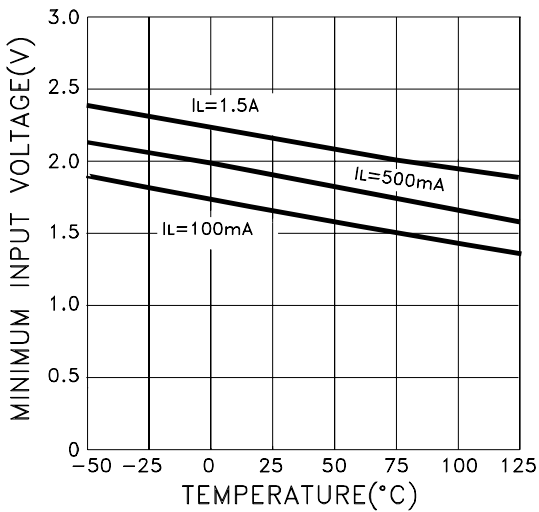
RIPPLE REJECTION



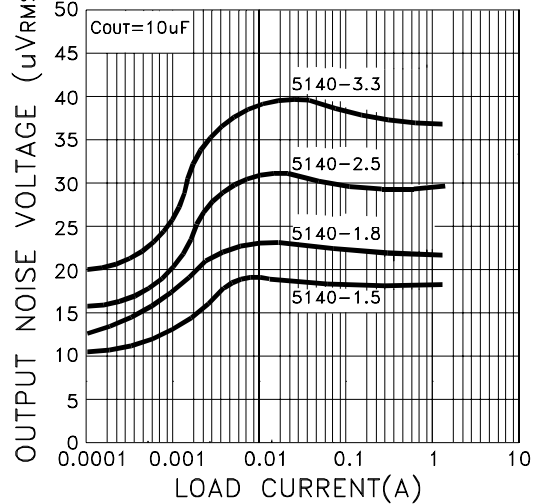
RIPPLE REJECTION



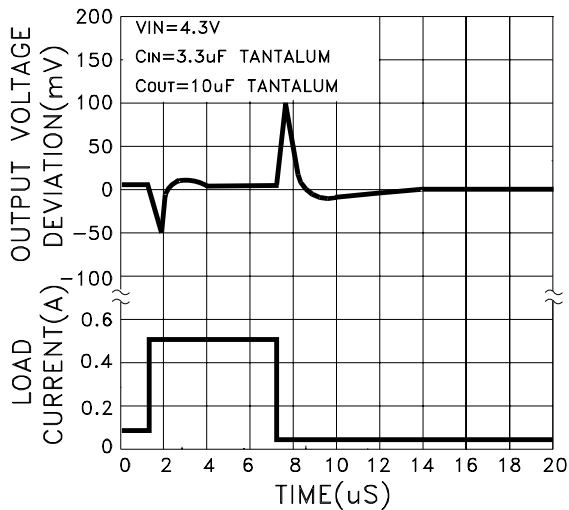
MINIMUM INPUT VOLTAGE



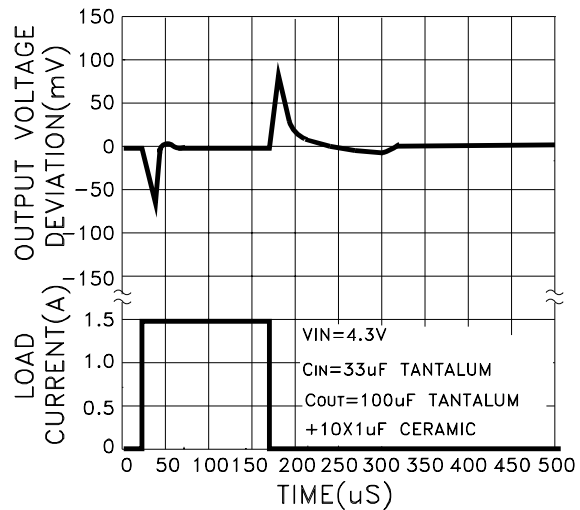
RMS OUTPUT NOISE vs LOAD CURRENT (10Hz to 100kHz)



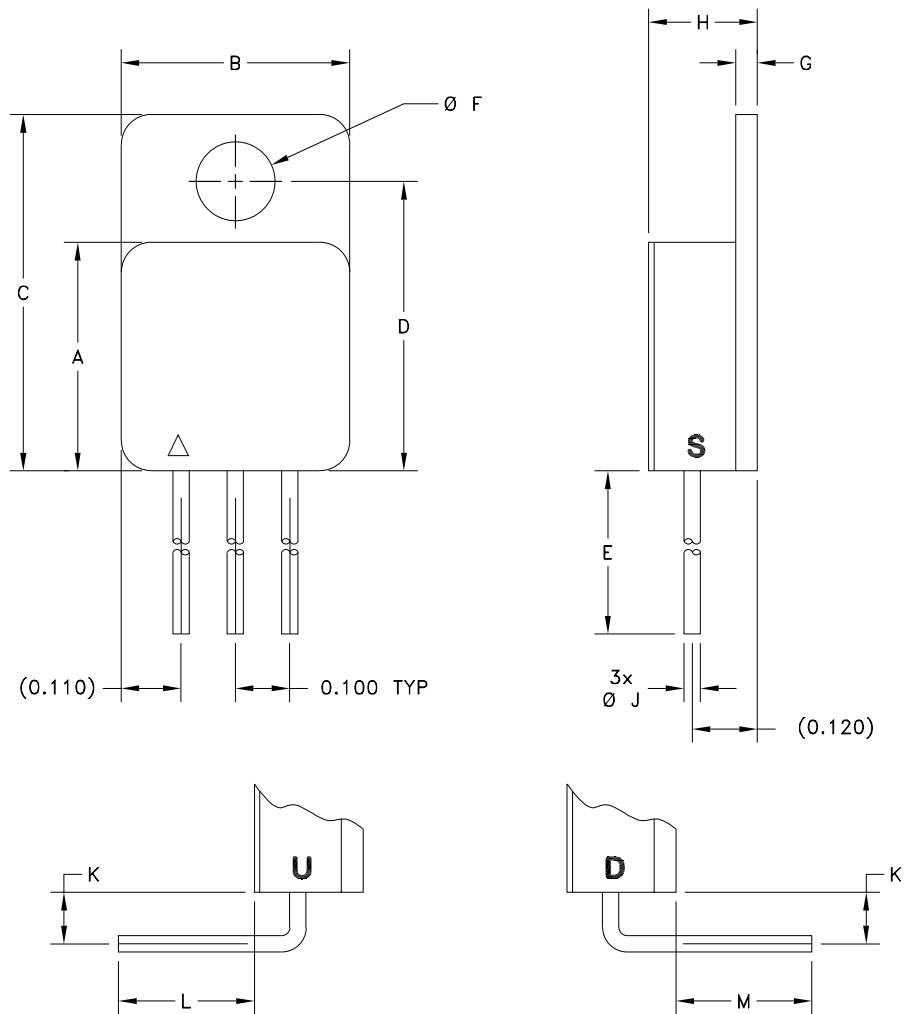
5140-3.3 TRANSIENT RESPONSE



5140-3.3 TRANSIENT RESPONSE



MECHANICAL SPECIFICATIONS

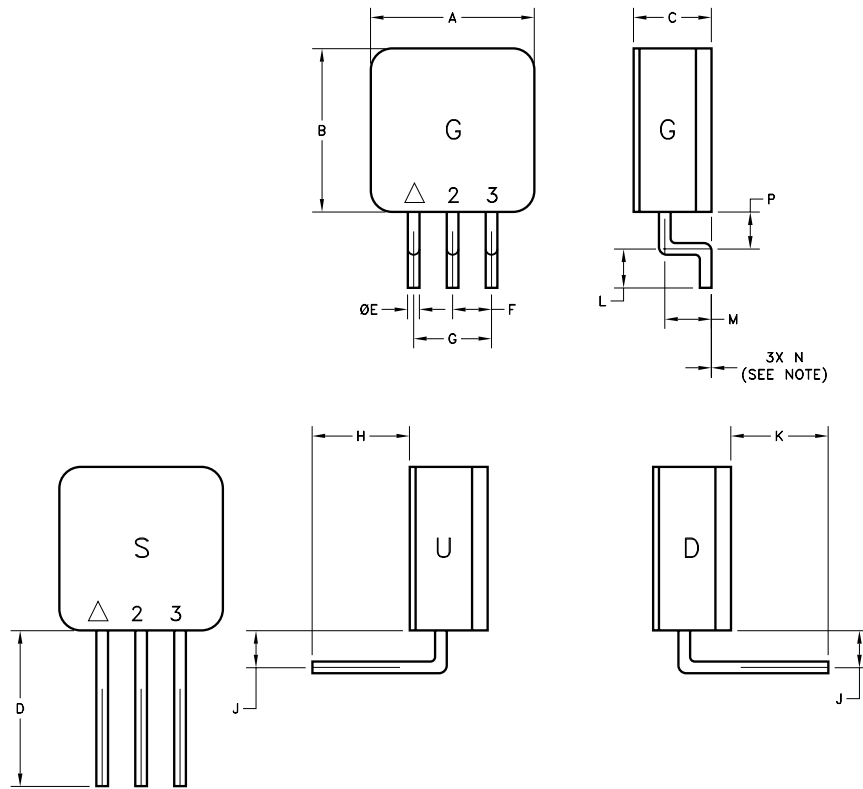


REF	MIN	MAX	REF	MIN	MAX
A	0.410	0.430	G	0.035	0.045
B	0.410	0.430	H	0.200	0.200
C	0.645	0.665	J	0.025	0.035
D	0.527	0.537	K	0.085	0.105
E	0.400		L	0.250	
F	0.140	0.150	M	0.250	

NOTE: ALL DIMENSIONS ARE ± 0.010 INCHES UNLESS OTHERWISE LABELED.
ESD Triangle Indicates Pin 1.

WEIGHT = 2.9 GRAMS TYPICAL

MECHANICAL SPECIFICATIONS CONT'D



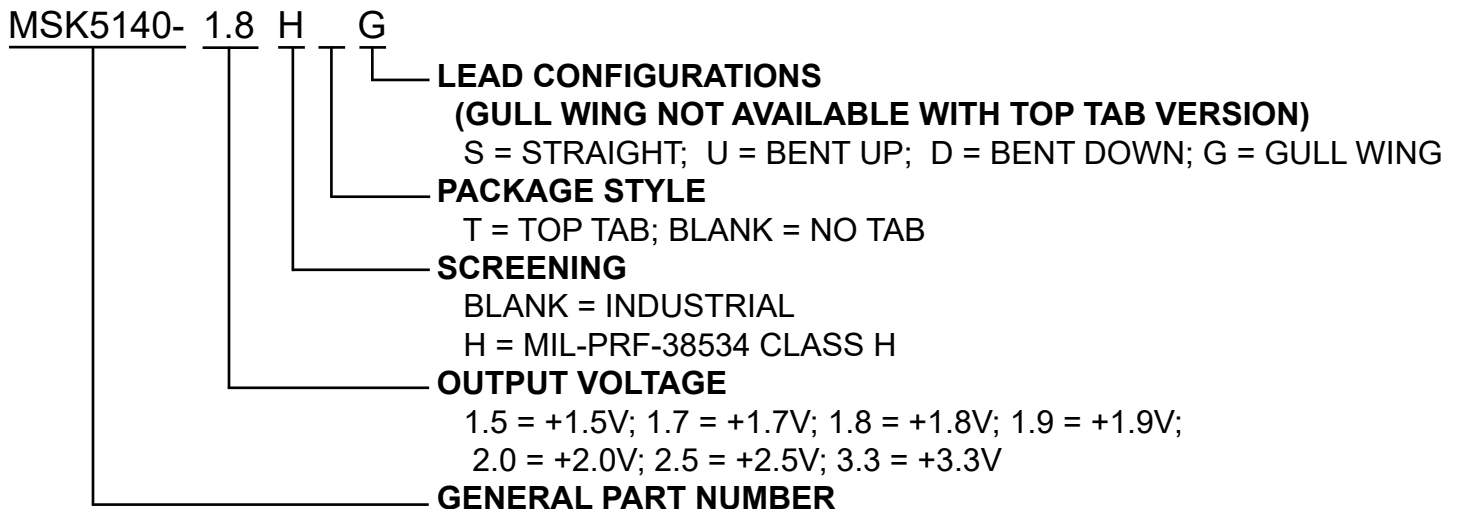
REF	MIN	MAX	REF	MIN	MAX
A	0.410	0.430	H	0.250	
B	0.410	0.430	J	0.085	0.105
C		0.200	K	0.250	
D	0.400		L	0.090	0.110
E	0.025	0.035	M	0.110	0.130
F	0.095	0.105	N	-0.003	0.003
G	0.195	0.205	P	0.085	0.105

NOTE: DIMENSION N IS THE DISTANCE FROM THE BOTTOM OF THE PIN TO THE BOTTOM OF THE PACKAGE.

WEIGHT = 2.9 GRAMS TYPICAL

NOTE: ALL DIMENSIONS ARE ± 0.010 INCHES UNLESS OTHERWISE LABELED.

ORDERING INFORMATION



The above example is a +1.8V, Military regulator with gull wing leads.

REVISION HISTORY

REV	STATUS	DATE	DESCRIPTION
D	Released	04/23	Remove MIL-PRF-38535 and update company name and website

TTM Technologies

www.ttm.com

The information contained herein is believed to be accurate at the time of printing. TTM Technologies reserves the right to make changes to its products or specifications without notice, however and assumes no liability for the use of its products. Please visit our website for the most recent revision of this data sheet.