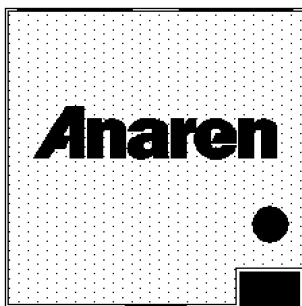


## Surface Mount Attenuator 150 Watts



### Description:

The D150NA30C4 is high performance Aluminum Nitride (AlN) surface mount attenuator. It is intended as a cost competitive alternative to standard attenuators and is well suited to all cellular frequency bands such as; GSM, DCS, PCS, PHS and UMTS. The high power handling makes the part ideal for circulator or coupler termination. The attenuation port is designed for power sampling.

### Features:

- 150 Watts
- DC – 4.6 GHz
- AlN Ceramic
- RoHS Compliant
- Non-Nichrome Resistive Element
- Low VSWR
- 100% Tested
- Small Size

### General Specifications:

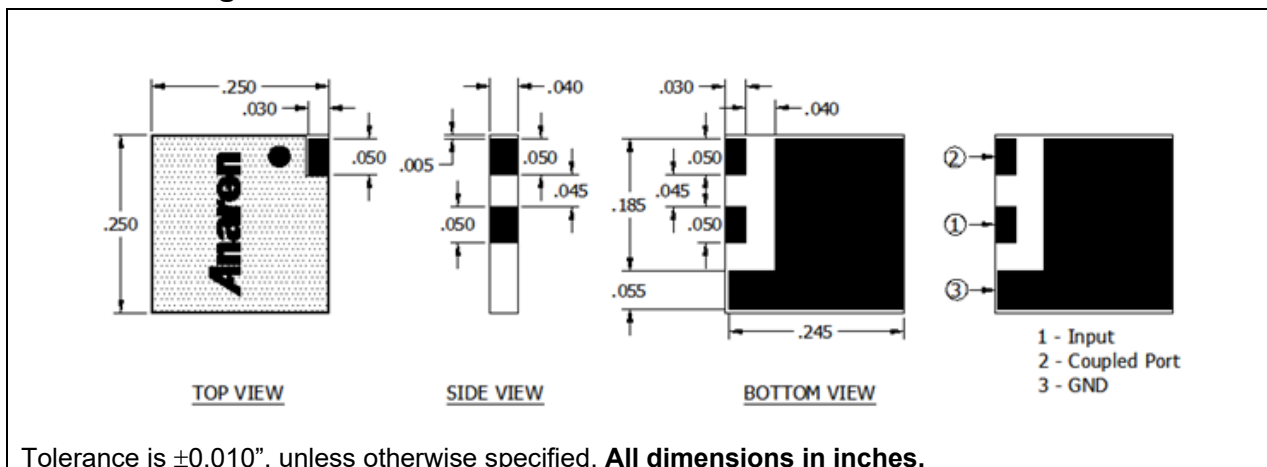
Resistive Element	Thick film
Substrate	AlN Ceramic
Terminal Finish	Matte Tin over Nickel Barrier
Operating Temperature	-50 to +200°C (see de rating chart)

### Electrical Specifications:

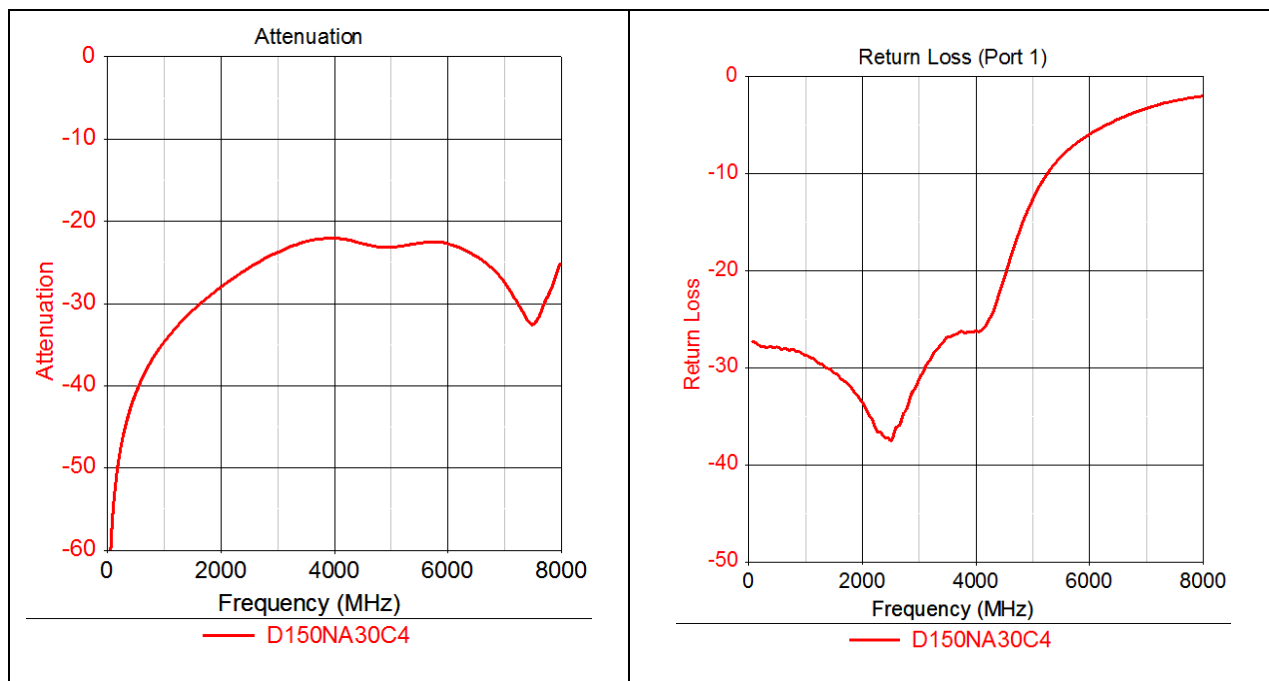
Power:	150 Watts
Frequency Range:	DC – 4.6GHz
Return Loss	20 dB (4.0 GHz)
Attenuation	16 dB (4.6 GHz)
	See table

Specification based on unit properly installed using suggested mounting instructions and a 50 ohm nominal impedance. **Specifications subject to change.**

### Outline Drawing:



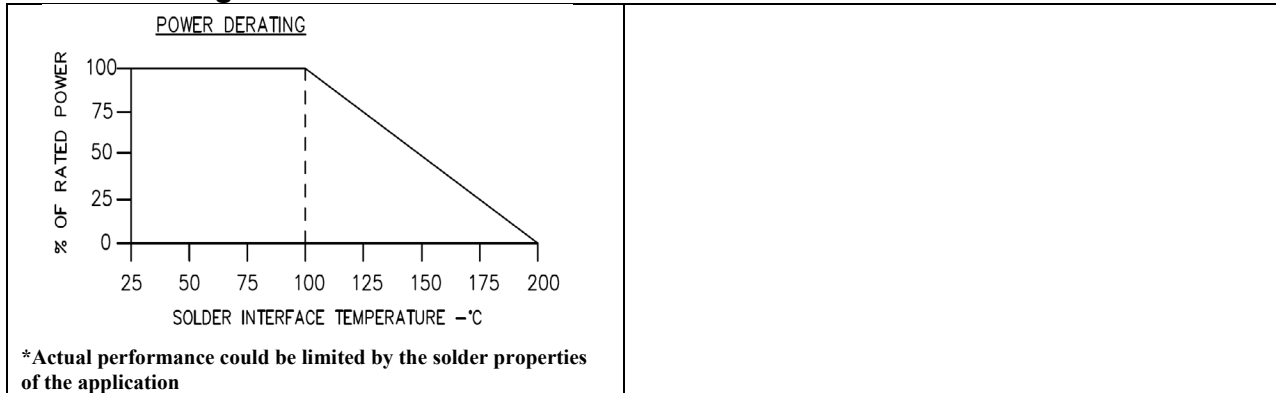
## Typical Performance:



## Attenuation (Db):

D150NA30C4		
Frequency (MHz)	Nominal Attenuation (dB)	Attenuation Tolerance (dB)
700	-38.0	+/-1.5
1000	-34.8	
1800	-29.2	
2200	-27.1	
2500	-25.7	
3700	-22.3	
4600	-22.3	

## Power de-rating:



## Tape & Reel:

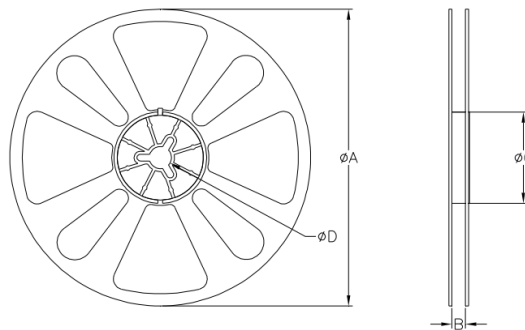
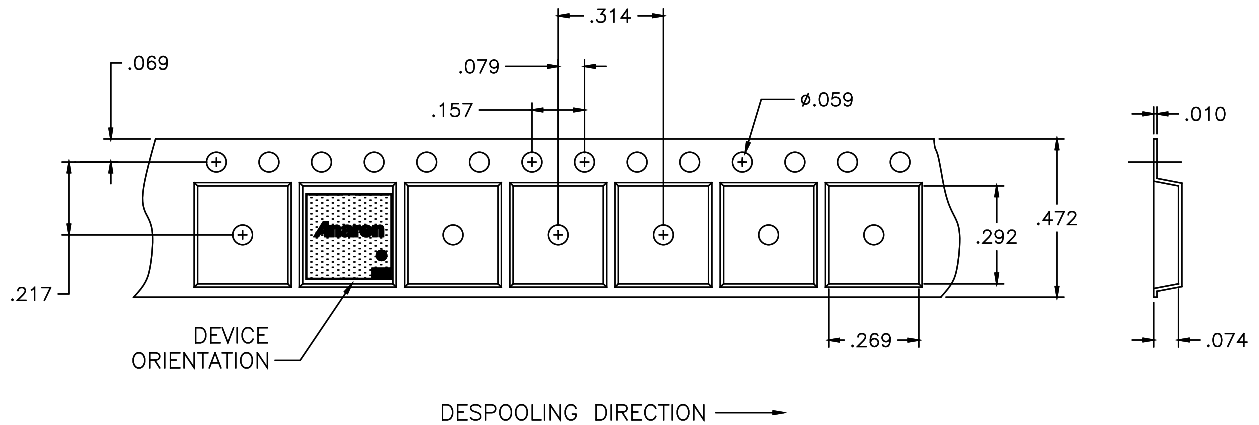


TABLE 1		
QUANTITY/REEL	REEL DIMENSIONS mm	
1000	$\phi A$	177.80
	B	12.00
	$\phi C$	50.80
	$\phi D$	13.00

**Contact us:**  
[rf&s\\_support@ttm.com](mailto:rf&s_support@ttm.com)