

**Hybrid Coupler**  
**3 dB, 90°**



**Description:**

The XMC1522E1-03G is a low profile, high performance 3dB hybrid coupler, with a high power rating of 90 Watts (AVG) and peak to average ratio of 12dB, in a new easy to use, Xinger style manufacturing friendly surface mount package. It is designed particularly for L-Band COTS Mil-Aero and other Wireless Communications applications. The XMC1522E1-03G is designed particularly for power splitting and combining, where tightly controlled coupling and low insertion loss is required.

Parts have been subjected to rigorous Xinger qualification testing and they are manufactured using materials with coefficients of thermal expansion (CTE) compatible with common substrates such as FR4, G-10, RF-35, RO4350 and polyimide. Available in 6 of 6 ENIG RoHS compliant finish.

**Features:**

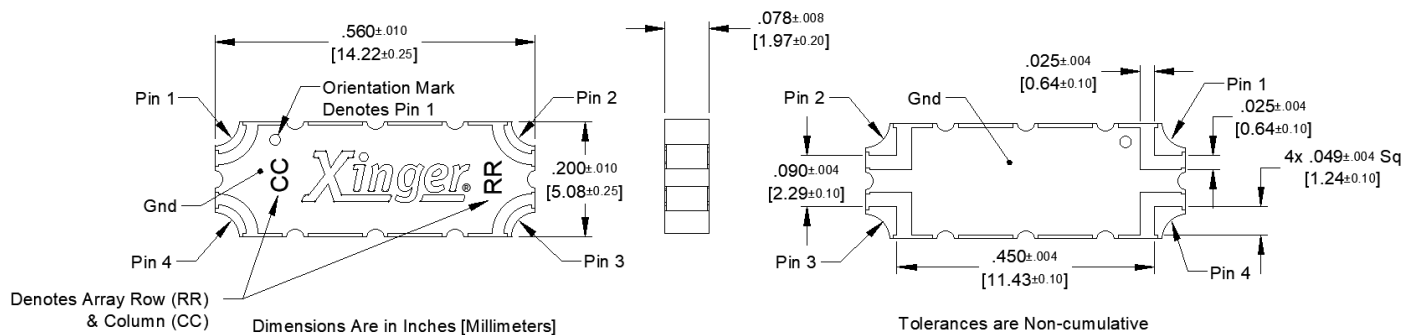
- 1500-2200 MHz
- L-Band COTS Mil-Aero, Wireless Applications
- High Power 90W (AVG)
- Peak to Average Ratio 12dB
- Very Low Loss (<0.15dB)
- Tight Amplitude Balance ( $\pm 0.20$ dB)
- High Isolation (>20dB)
- Production Friendly
- Tape and Reel
- ENIG Finish

**Electrical Specifications:**

Frequency	Isolation	Insertion Loss	Return Loss
MHz	dB Min	dB Max	dB Max
1500-2200	20	0.15	20
Phase	Amplitude Balance	Power	Operating Temp.
Degrees	dB Max	Avg. Watts @95°C	°C
90 $\pm$ 3.0	$\pm$ 0.20	90	-55 to +150

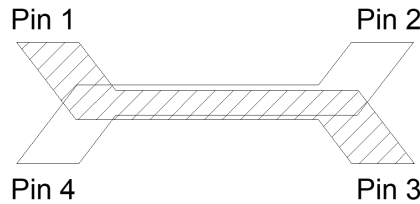
\*Power Handling for commercial, non-life critical applications. See derating chart for other applications. Specification based on performance of unit properly installed on a TTM test board with small signal applied. Specifications subject to change without notice. Refer to parameter definitions for details.

**Mechanical Outline:**



### Hybrid Coupler Pin Configuration:

The XMC1522E1-03G has an orientation marker to denote Pin 1. Once port one has been identified the other ports are known automatically. Please see the chart below for clarification:

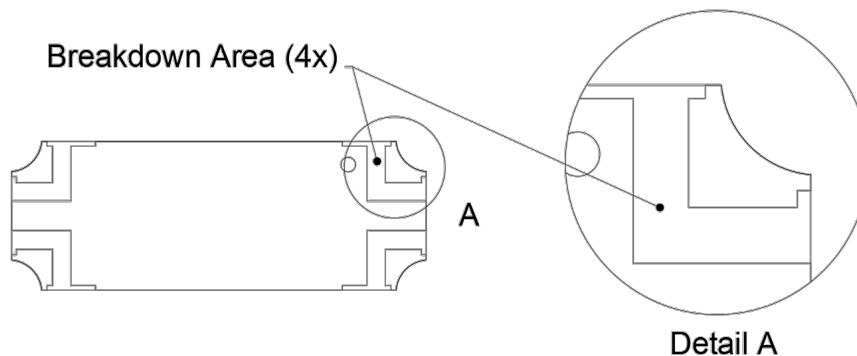


Configuration	Pin 1	Pin 2	Pin 3	Pin 4
Splitter	Input	Isolated	-3dB $\angle\theta - 90$	-3dB $\angle\theta$
Splitter	Isolated	Input	-3dB $\angle\theta$	-3dB $\angle\theta - 90$
Splitter	-3dB $\angle\theta - 90$	-3dB $\angle\theta$	Input	Isolated
Splitter	-3dB $\angle\theta$	-3dB $\angle\theta - 90$	Isolated	Input
*Combiner	A $\angle\theta - 90$	A $\angle\theta$	Isolated	Output
*Combiner	A $\angle\theta$	A $\angle\theta - 90$	Output	Isolated
*Combiner	Isolated	Output	A $\angle\theta - 90$	A $\angle\theta$
*Combiner	Output	Isolated	A $\angle\theta$	A $\angle\theta - 90$

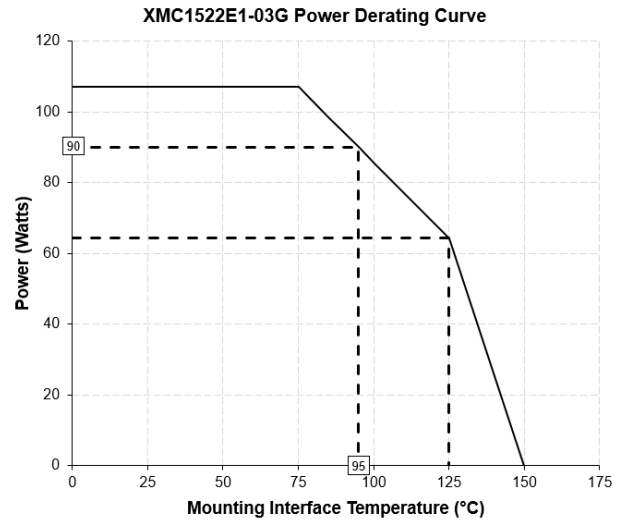
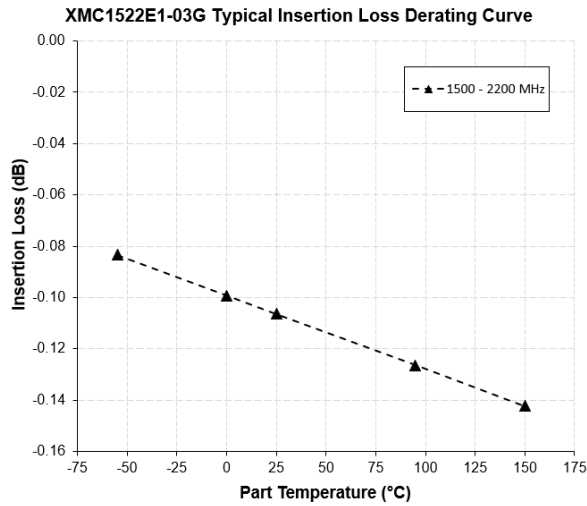
\*Note: "A" is the amplitude of the applied signals. When two quadrature signals with equal amplitudes are applied to the coupler as described in the table, they will combine at the output port. If the amplitudes are not equal, some of the applied energy will be directed to the isolated port.

### Peak Power Handling:

High-Pot testing of these couplers during the qualification procedure resulted in a minimum breakdown voltage of 1.98 Kv (minimum recorded value). This voltage level corresponds to a breakdown resistance capable of handling at least 12dB peak over average power levels, for very short durations. The breakdown location consistently occurred across the air interface at the coupler contact pads (see illustration below). The breakdown levels at these points will be affected by any contamination in the gap area around these pads. These areas must be kept clean for optimum performance. It is recommended that the user test for voltage breakdown under the maximum operating conditions and over worst case modulation induced power peaking. This evaluation should also include extreme environmental conditions (such as high humidity).



### Insertion Loss and Power Derating Curves:



#### Insertion Loss Derating:

The insertion loss, at a given frequency, of the coupler is measured at 25°C and then averaged. The measurements are performed under small signal conditions (i.e. using a Vector Network Analyzer). The process is repeated at -55°C, 95°C and 150°C. A best-fit line for the measured data is computed and then plotted from -55°C to 150°C.

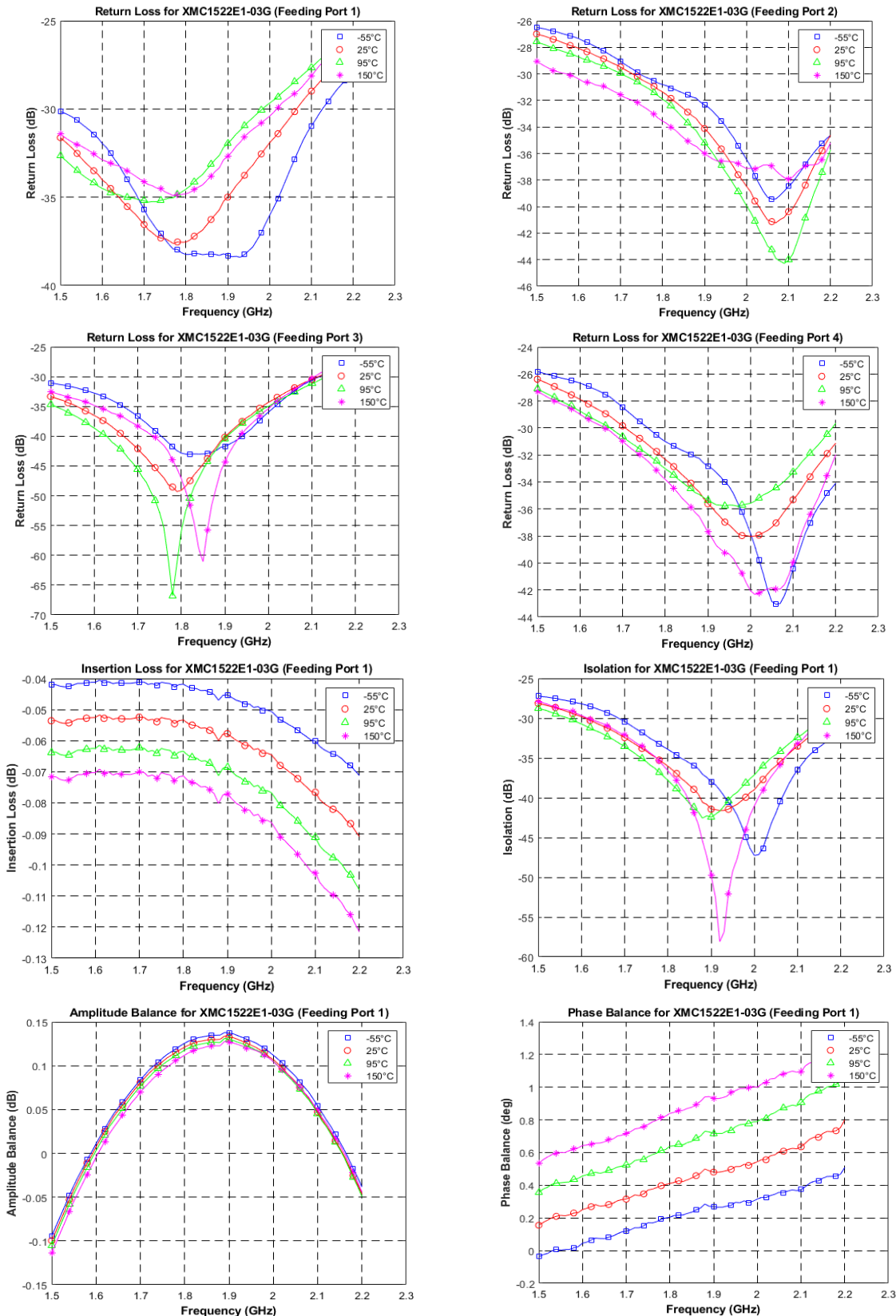
#### Power Derating:

The power handling and corresponding power derating plots are a function of thermal resistance, mounting surface temperature (base plate temperature), maximum continuous operating temperature of the coupler, and the thermal insertion loss. The thermal insertion loss is defined in the Power Handling section of the data sheet.

As the mounting interface temperature approaches the maximum continuous operating temperature, the power handling decreases to zero.

If mounting temperature is greater than 95°C, the Xinger coupler will perform reliably if the input power is derated to the curve above.

Typical Performance:

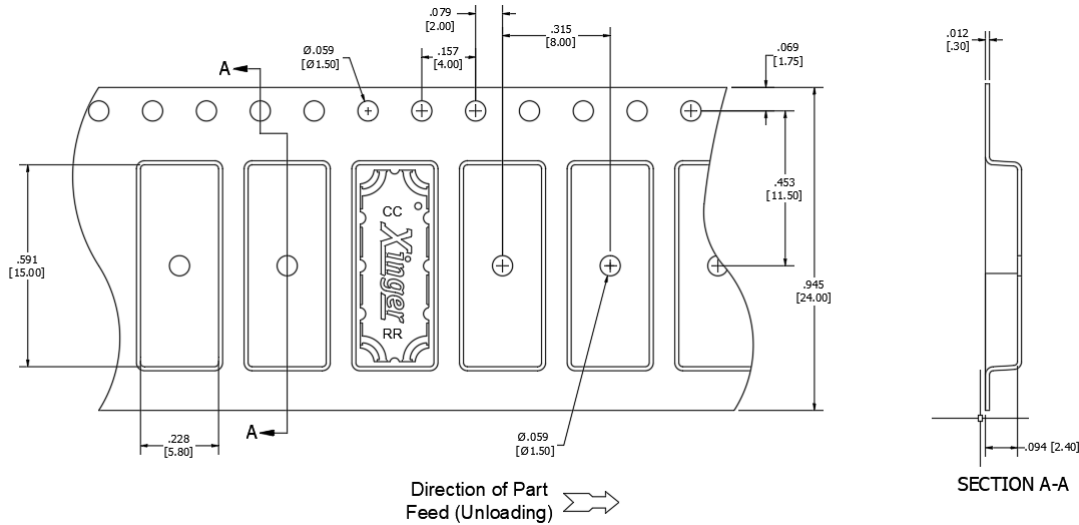


**Definition of Measured Specifications:**

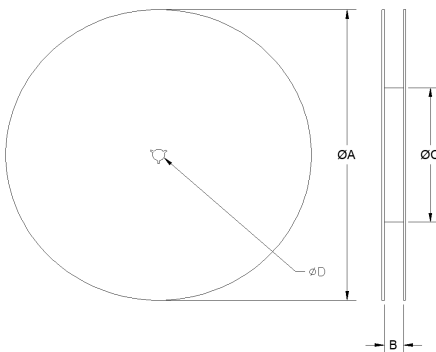
Parameter	Definition	Mathematical Representation
<b>VSWR</b> (Voltage Standing Wave Ratio)	The impedance match of the coupler to a 50Ω system. A VSWR of 1:1 is optimal.	$VSWR = \frac{V_{max}}{V_{min}}$ Vmax = voltage maxima of a standing wave Vmin = voltage minima of a standing wave
<b>Return Loss</b>	The impedance match of the coupler to a 50Ω system. Return Loss is an alternate means to express VSWR.	$\text{Return Loss(dB)} = 20\log \frac{VSWR + 1}{VSWR - 1}$
<b>Insertion Loss</b>	The input power divided by the sum of the power at the two output ports.	$\text{Insertion Loss(dB)} = 10\log \frac{P_{in}}{P_{cpl} + P_{direct}}$
<b>Isolation</b>	The input power divided by the power at the isolated port.	$\text{Isolation(dB)} = 10\log \frac{P_{in}}{P_{iso}}$
<b>Phase Balance</b>	The difference in phase angle between the two output ports.	Phase at coupled port – Phase at direct port
<b>Amplitude Balance</b>	The power at each output divided by the average power of the two outputs.	$10\log \frac{P_{cpl}}{(P_{cpl} + P_{direct})/2} \text{ and } 10\log \frac{P_{direct}}{(P_{cpl} + P_{direct})/2}$

### Packaging and Ordering Information:

Parts are available in reels. Packaging follows EIA 481 for reels. Parts are oriented in tape and reel as shown below. Tape and reel is available in 250 or 2000 pcs per reel.



Dimensions are in Inches [Millimeters]



**TABLE 1 (for 250 pcs)**  
REEL DIMENSIONS: inches [mm]

ØA	7.1 [180.00]
B	.945 [24.00]
ØC	2.36 [60.00]
ØD	0.512 [13.00]

**TABLE 2 (for 2000 pcs)**  
REEL DIMENSIONS: inches [mm]

ØA	13.0 [330.00]
B	.945 [24.00]
ØC	4.017 [102.03]
ØD	0.512 [13.00]

### XMC 1522 E 1 - 03 G R1/R

Function & Family	Frequency	Package Size	Power Handling	Coupling	Finish	Reel Size
XMC = Mil-Aero Coupler	1522 = typ freq range 1.5 to 2.2 GHz	E = 0.560" x 0.200"	1 = 1-100W	03 = 3dB	G = ENIG	R1 = 250 pc R = 2000 pc

Contact us:  
[rf&s\\_support@ttm.com](mailto:rf&s_support@ttm.com)