

**Xinger**<sup>®</sup>



## 1:1 Inverted Doherty Combiner

### Description:

The X3DC07F1AS is a low profile, high performance Doherty Combiner in a new easy to use, manufacturing friendly surface mount package. The X3DC07F1AS is designed particularly for Doherty Amplifier applications, where a tightly controlled phase of 90 degrees, 1:1 splitting ratio and low insertion loss are required for maximum and low power condition. It can be used in high power applications.

Parts have been subjected to rigorous qualification testing and they are manufactured using materials with coefficients of thermal expansion (CTE) compatible with common substrates such as FR4, RF-35, RO4350 and polyimide. Produced with 6 of 6 RoHS compliant tin immersion finish.

### Electrical Specifications\*\*

#### Features:

- 728-768 MHz
- Low Amp Imbalance
- Low Loss
- Production Friendly
- Tape and Reel
- Lead Free

Frequency	Return Loss <sup>[1]</sup>	Insertion Loss <sup>[1]</sup>	Amplitude Imbalance <sup>[1]</sup>	Phase Imbalance <sup>[1]</sup>
MHz	dB Min	dB Max	dB Max	Degrees
728-768	23	0.35	±0.2	90 ± 4.0
Operating Temp.	Return Loss <sup>[2]</sup>	Insertion Loss <sup>[2]</sup>	Port Extension <sup>[3]</sup>	Power
°C	dB Min	dB Max	Degrees	Avg. CW Watts
-55 to +95	23	0.3	0	20

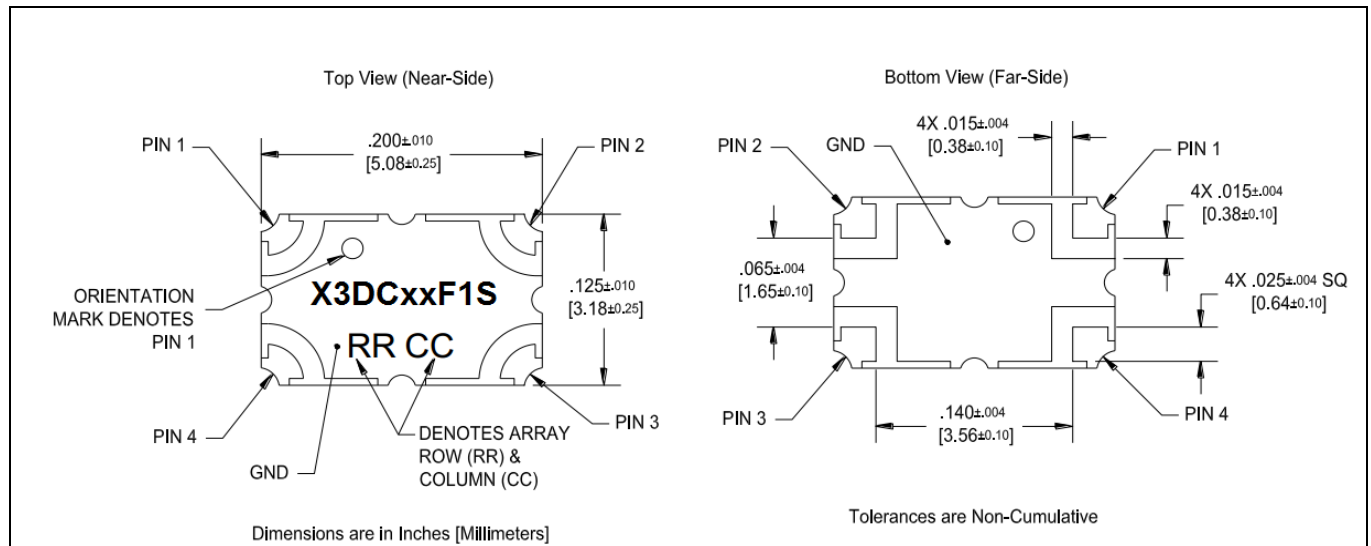
\*\*Specification based on performance of unit properly installed on TTM test board

[1] At maximum power condition, Doherty combiner functions as a 1:1 power combiner.

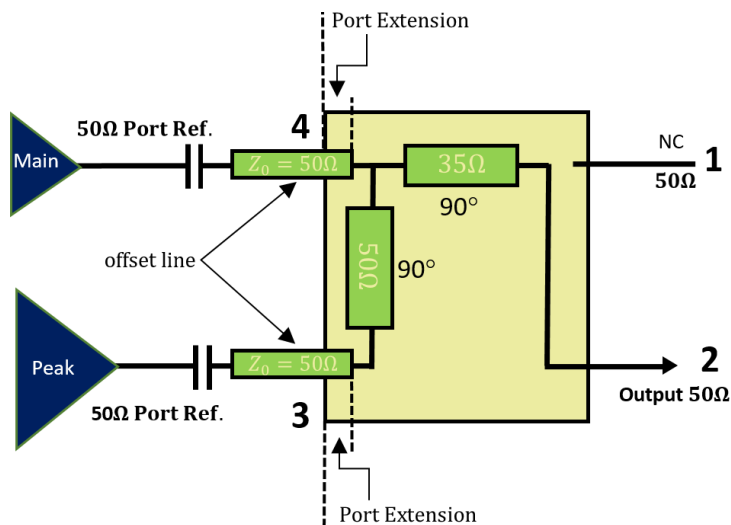
[2] At low power condition, Doherty combiner works as an impedance transformer (see page 3)

[3] At low power condition, the offset lines at the input need to be adjusted by 0 deg. (if required) (see page 3)

### Mechanical Outline:



## Doherty Amplifier Configuration



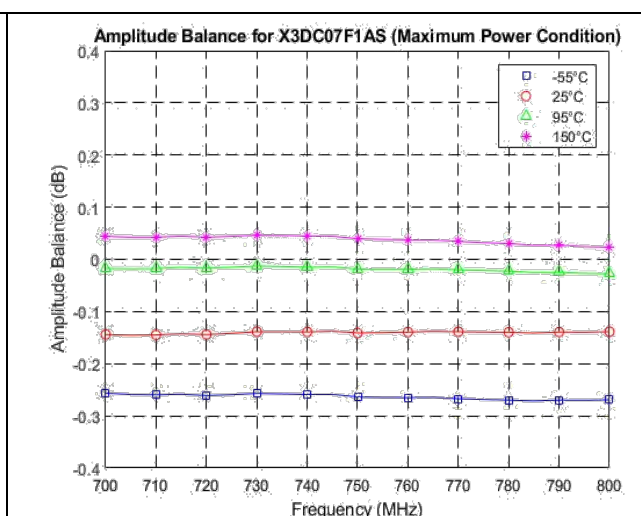
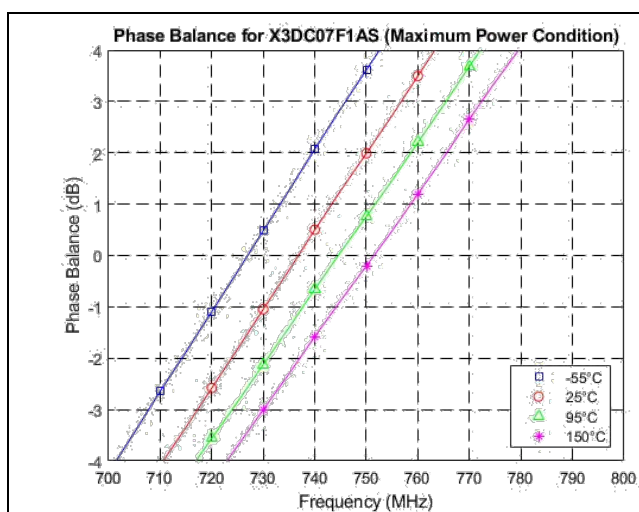
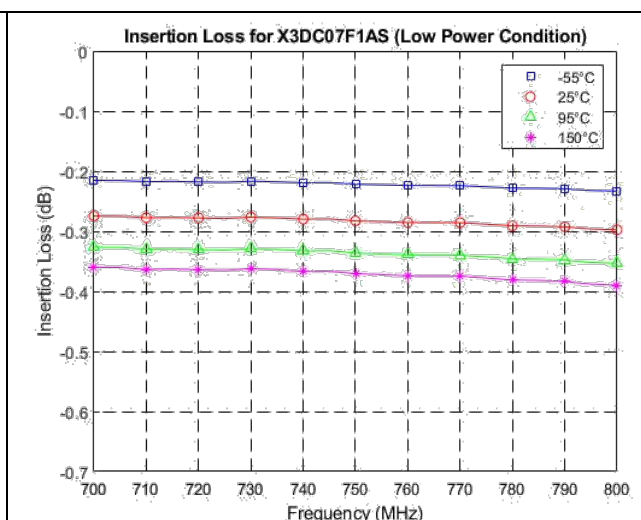
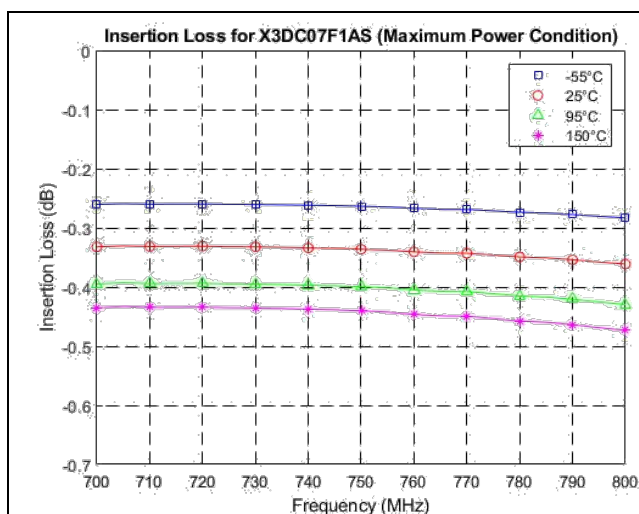
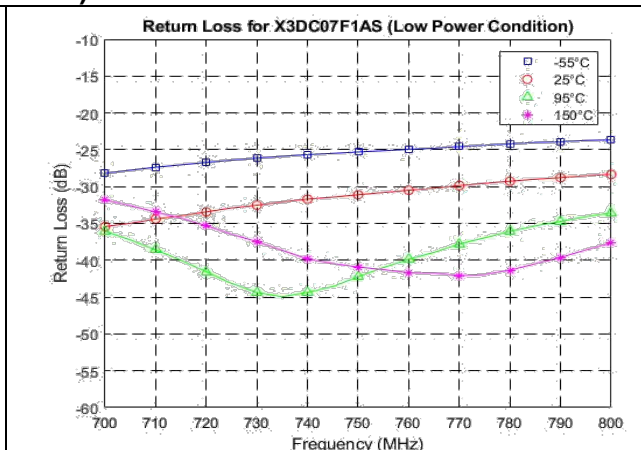
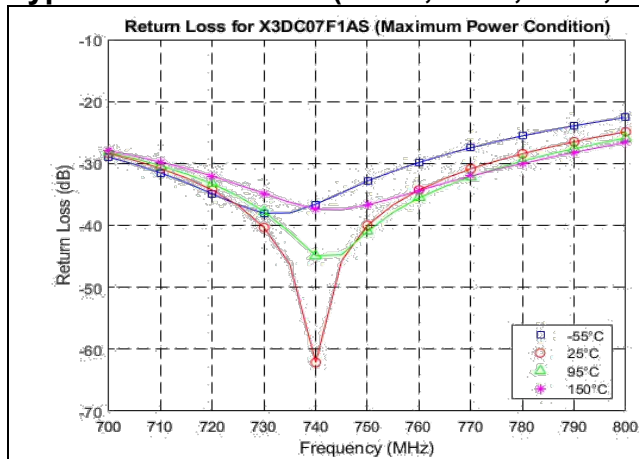
1:1 Inverted Doherty Combiner

## Doherty Combiner Pin Configuration

The X3DC07F1AS has an orientation marker to denote Pin 1. Once port one has been identified the other ports are known automatically. Please see the chart below for clarification:

Pin 1	Pin 2	Pin 3	Pin 4
Not Connected	Combining Port	Peak Amp Port	Main Amp Port

**Typical Performance (-55°C, 25°C, 95°C, and 150°C): 700-800MHz**



## Definition of the Specifications

To guarantee the part performance in Doherty architecture, the part is specified in Doherty operation for maximum power condition and low power condition. The following specification definition assumes the extra port extension is already applied to the raw S parameter and the parts is measured with Pin n connected to Port n (where n=1, 2, 3, 4).

### Maximum power condition

Under the maximum power condition, the Doherty architecture requires main amplifier and peak amplifier to work at full capacity with Main at 50Ω and Peak at 50Ω. The two amplifiers should deliver RF power ratio of 1:1 and 90 degree phase difference

Parameter	Definition	Mathematical Representation
<b>Return Loss</b>	The impedance match at the combining port to a 50Ω system.	$20\log S_{22} $
<b>Insertion Loss</b>	The combined power divided by the sum of input power under the perfect combining condition.	$10\log( S_{23} ^2 +  S_{24} ^2)$
<b>Amplitude Imbalance</b>	The magnitude difference between Main-Combined path and Peak-Combined path under the perfect combining condition.	$\frac{1}{2}(20\log S_{24}  - 20\log S_{23} )$
<b>Phase Imbalance</b>	The phase difference between Peak-Combined path and Main-Combined path at $\omega_c = 940\text{MHz}$ .	$\text{Phase}(S_{24}(\omega_c)) - \text{Phase}(S_{23}(\omega_c))$

### Low power condition

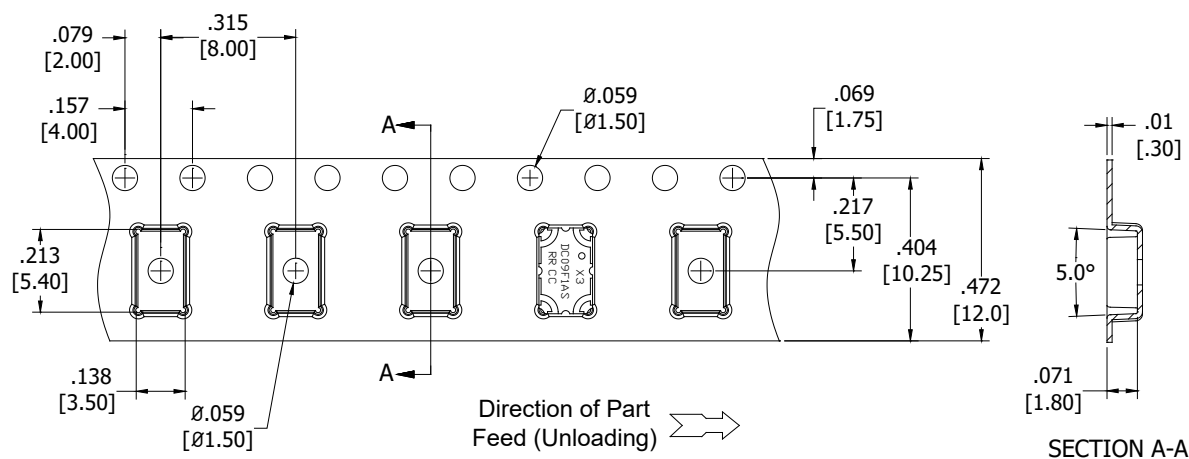
Under low power condition, the Doherty operation turns off peak amplifier and requires main amplifier to be terminated with impedance of 25Ω. In this configuration, Doherty combiner serves as an impedance transformer, transforming 50Ω at combining port to 25Ω at main amplifier port. The following specification is defined under the port impedance condition of Port 2 (Combining Port) 50Ω, Port 4 (Main Amp Port) 25Ω and Port 3 (Peak Amp Port) terminated with a short (low impedance).

**Port Extension:** There are inevitably short lines associating with input ports in some high frequency band parts. The length of the short line is specified as electrical length at center frequency and referred as port extension in this datasheet. The designer should take this length into the account to optimize the offset line length. The return loss and insertion loss specified in the Electrical Specifications table are after incorporating port extension.

Parameter	Definition	Mathematical Representation
<b>Return Loss</b>	The impedance match of the 50Ω to 25Ω transformer.	$20\log S_{22} $
<b>Insertion Loss</b>	The output power divided by input power.	$20\log S_{42} $

### Packaging and Ordering Information:

Parts are available in reels. Packaging follows EIA 481-D for reels. Parts are oriented in tape and reel as shown below. Tape and reel is available in 4000 pcs per reel.



Dimensions are in Inches [Millimeters]

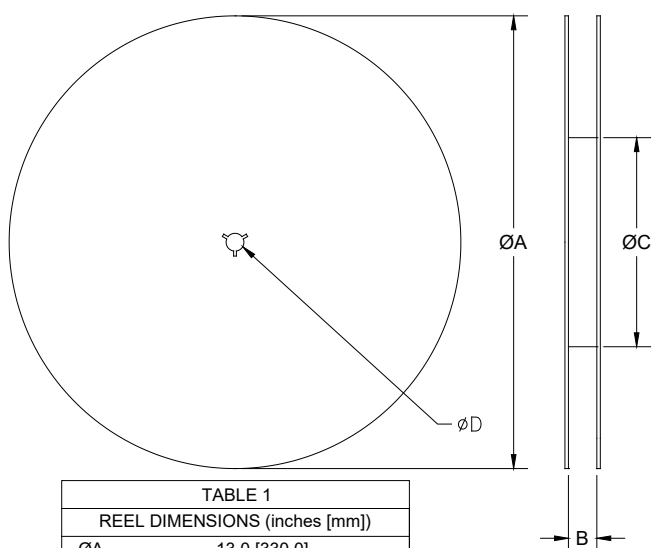


TABLE 1	
REEL DIMENSIONS (inches [mm])	
ØA	13.0 [330.0]
B	.945 [24.0]
ØC	4.017 [102.03]
ØD	0.512 [13.0]

**Contact us:**

[rf&s\\_support@ttm.com](mailto:rf&s_support@ttm.com)